

FEATURES AND SPECIFICATIONS

Features and Benefits

- Housing is compatible with SMT processing
- Blanked tuning fork terminal, smooth contact surface
- Optimum tail true position control
- Date-coded assembly
- Fork lock retention to board

Reference Information

Product Specification: PS-79058
 UL File No.: E29179
 CSA File No.: LR19980A-281
 Designed In: Inches

Electrical

Voltage: 30V
 Current: 1.0A
 Contact Resistance: 25mΩ max.
 Dielectric Withstanding Voltage: 500V AC
 Insulation Resistance: 1000 MΩ min.

Mechanical

Mating Force: 5.3 oz max.
 Unmating Force: 1.0 oz min.
 Normal Force: 100g

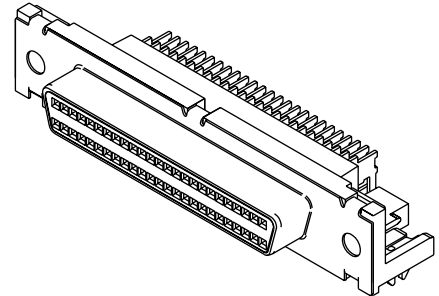
Physical

Housing: Black high-temperature thermoplastic, UL 94V-0
 Contact: Phosphor Bronze
 Plating: 30μ" Gold in contact area, 75μ" Tin/Lead on solder tails, all over Nickel overall
 Operating Temperature: -55 to +105°C

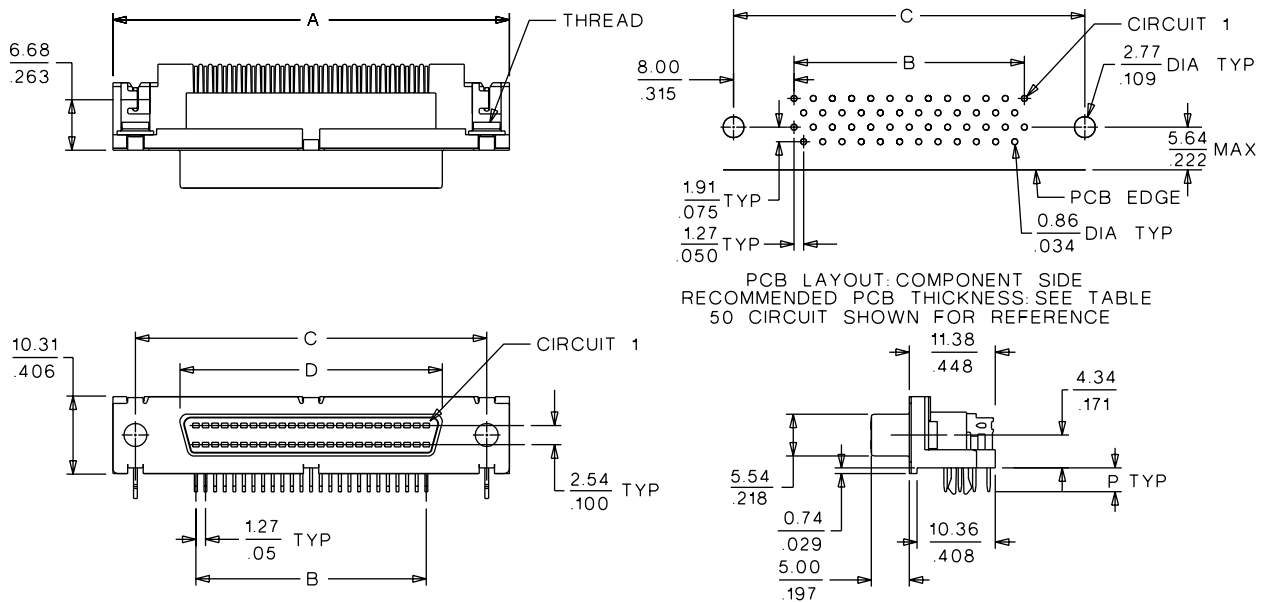
molex® 1.27mm (.050") Pitch SCSI+ Shielded Receptacle

79059

Right Angle without Latches



CATALOG DRAWING (FOR REFERENCE ONLY)



I/O Connectors

ORDERING INFORMATION AND DIMENSIONS

Circuits	Order No.		Thread	Dimension					Recommended PCB Thickness
	Automatic*	Manual**		A	B	C	D	P	
50	15-87-6040	79059-1901	4-40	52.45 (2.065)	30.48 (1.200)	46.48 (1.830)	34.70 (1.366)	3.18 (.125)	1.57 (.062)
	15-87-6041	79059-1905		52.45 (2.065)	30.48 (1.200)	46.48 (1.830)	34.70 (1.366)	3.18 (.125)	2.36 (.093)
	15-87-6042	79059-1909		52.45 (2.065)	30.48 (1.200)	46.48 (1.830)	34.70 (1.366)	4.19 (.165)	3.18 (.125)
	15-87-6043	79059-1918	2-56	52.45 (2.065)	30.48 (1.200)	46.48 (1.830)	34.70 (1.366)	3.18 (.125)	1.57 (.062)
	15-87-6044	79059-1922		52.45 (2.065)	30.48 (1.200)	46.48 (1.830)	34.70 (1.366)	3.18 (.125)	2.36 (.093)
	15-87-6045	79059-1926		52.45 (2.065)	30.48 (1.200)	46.48 (1.830)	34.70 (1.366)	4.19 (.165)	3.18 (.125)
68	15-87-6200	79059-1902	4-40	63.88 (2.515)	41.91 (1.650)	57.91 (2.280)	46.13 (1.816)	3.18 (.125)	1.57 (.062)
	15-87-6201	79059-1906		63.88 (2.515)	41.91 (1.650)	57.91 (2.280)	46.13 (1.816)	3.18 (.125)	2.36 (.093)
	15-87-6202	79059-1910		63.88 (2.515)	41.91 (1.650)	57.91 (2.280)	46.13 (1.816)	4.19 (.125)	3.18 (.125)
	15-87-6060	79059-1919	2-56	63.88 (2.515)	41.91 (1.650)	57.91 (2.280)	46.13 (1.816)	3.18 (.125)	1.57 (.062)
	15-87-6061	79059-1923		63.88 (2.515)	41.91 (1.650)	57.91 (2.280)	46.13 (1.816)	3.18 (.125)	2.36 (.093)
	15-87-6062	79059-1927		63.88 (2.515)	41.91 (1.650)	57.91 (2.280)	46.13 (1.816)	4.19 (.165)	3.18 (.125)

* For automatic placement of screw hardware

** For manual placement of screw hardware

Note: Available screwlock hardware provides panel mounting, maintains cable-ground connection and accepts mating and jackscrew hardware to provide plug retention. Please see page Q-39.